



EAGLE RIVER HOMES

The Ultimate Home Value with Quality,
Durability & Flexibility in Design

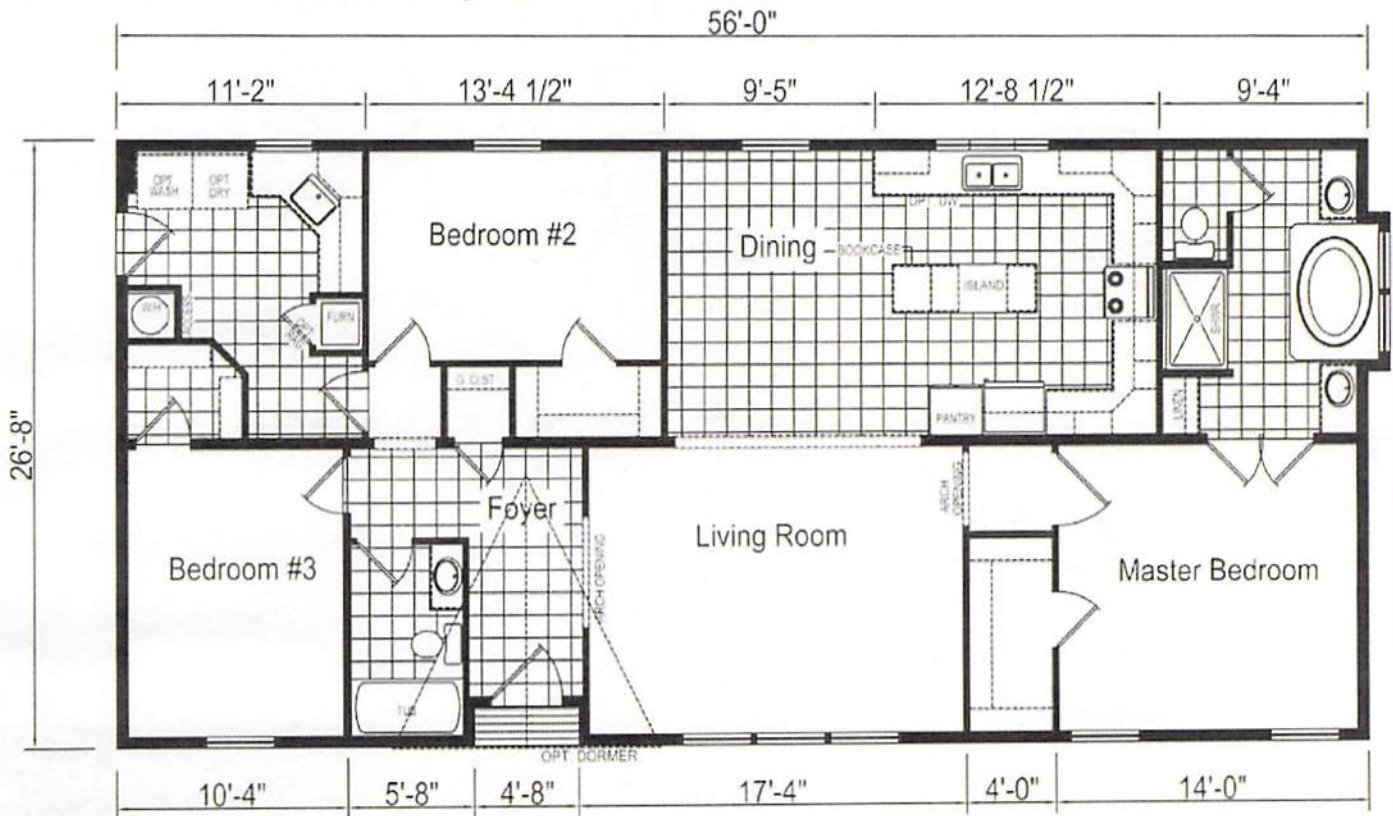


TWIN TOWN
homes



- At Twin Town Homes -
We make every step of your home
buying experience enjoyable and
uncomplicated and will do everything in
our power to ensure you a quality
manufactured home at the lowest price!

804 Main Street
Oxford, ME 04270
Sales Office: (207) 539-4472



Hudson Series Model 60J7009S
26' 8" x 56' 0" Appx. 1,493 Sq. Ft.
3 Bedroom, 2 Bath

Easy Living Package Home

8' Flat Textured Ceilings Standard
Painted Finish Drywall Impact Areas
And Much More All Standard In This Home

Due to constant product improvement all prices and specifications are subject to change with out notice or obligation to Eagle River Homes. Dimensions are stated to industry standards. Width & Length dimensions are nominal and not to be used for set up of home. The sq footage shown is nominal to exterior floor size.



EAGLE RIVER HOMES



TWIN TOWN HOMES



1000 sq. ft.

1000 sq. ft.

1000 sq. ft.

1000 sq. ft.

1000 sq. ft.

1000 sq. ft.

1000 sq. ft.

1000 sq. ft.

1000 sq. ft.

1000 sq. ft.

1000 sq. ft.

1000 sq. ft.

1000 sq. ft.

1000 sq. ft.

1000 sq. ft.

1000 sq. ft.

1000 sq. ft.

1000 sq. ft.

1000 sq. ft.

1000 sq. ft.

1000 sq. ft.

1000 sq. ft.

1000 sq. ft.



Due to constant product improvement all prices and specifications are subject to change with out notice or obligation to Eagle River Homes. Dimensions are stated to industry standards. Width & Length dimensions are nominal and not to be used for set up of home. The sq. footage shown is nominal to exterior floor size.