

THIS HOME HAS BEEN DESIGNED SPECIFICALLY FOR:

2856 WOODLAND

STREET
TOWN, STATE ZIP
COUNTY

BUILDER:

CHAMPION
MOD INC.

CHAMPION FACTORY 041
CHAMPION MODULAR, INC.
10642 S. SUSQUEHANNA TRAIL
LIVERPOOL, PA 17045



BUILDER:
CHAMPION MOD INC.

CUSTOMER/PROJECT:
WOODLAND

ENGINEER'S / ARCHITECT'S SEAL

APPROVERS SEAL

MODIFICATIONS

PROJECT:
WOODLAND
TITLE:
COVER SHEET

DRAWN BY: SAN
DATE: 09-01-21
SCALE: N.T.S.
FILENAME: THE WOODLAND 56

SHEET:
COVER (2)

PROPRIETARY AND CONFIDENTIAL
THESE DRAWINGS AND SPECIFICATIONS ARE ORIGINAL
PROPRIETARY AND CONFIDENTIAL MATERIALS OF CHAMPION.
COPYRIGHT © 1976-2017 BY CHAMPION

+/- 17'-7" TOP OF SILL TO PEAK
8'-0" 1ST FLOOR CEILING HEIGHT
1ST FLOOR FLOOR
TOP OF SILL
GRADE



FRONT ELEVATION

SITE CONDITIONS:

GROUND SNOW LOAD: - PSF
WIND SPEED: - VULT MPH
EXPOSURE: -
SEISMIC CATEGORY: -
USE GROUP: SINGLE FAMILY
CONSTRUCTION TYPE: VB WOOD FRAME UNPROTECTED

SQUARE FOOTAGE:

FIRST FLOOR: 1,540 SQ. FT.
SECOND FLOOR: NA SQ. FT.
BONUS ROOM: NA SQ. FT.
GARAGE: NA SQ. FT.
TOTAL: 1,540 SQ. FT.
OVERALL SIZE: 27'-6" x 56'-0"
MODEL: RANCH

BUILDER / OWNER SIGNATURES:

ACCEPTED BY: DATE:
TITLE:

NOTES:

- ITEMS SHOWN ON THE EXTERIOR ELEVATION DRAWINGS ARE FOR ILLUSTRATIVE PURPOSES ONLY
- GRILLS SHOWN ARE FOR ILLUSTRATIVE PURPOSES ONLY (SEE WINDOW MANUFACTURER CATALOG FOR ACTUAL GRILL PATTERN)

CHAMPION FACTORY 041
CHAMPION MODULAR, INC.
10642 S. SUSQUEHANNA TRAIL
LIVERPOOL, PA 17045



BUILDER:
CHAMPION MOD INC.

CUSTOMER/PROJECT:
WOODLAND

ENGINEER'S / ARCHITECT'S SEAL

APPROVERS SEAL

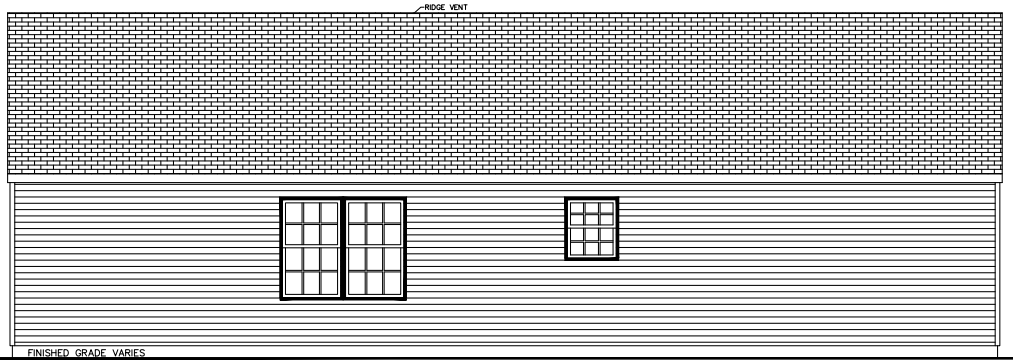
MODIFICATIONS

PROJECT:
WOODLAND
TITLE:
ELEVATIONS

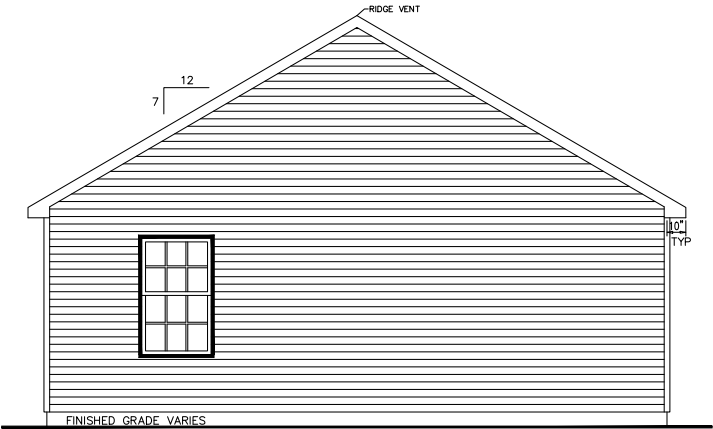
DRAWN BY: SAN
DATE: 09-01-21
SCALE: N.T.S.
FILENAME: THE WOODLAND 56

SHEET:
ELEVATIONS

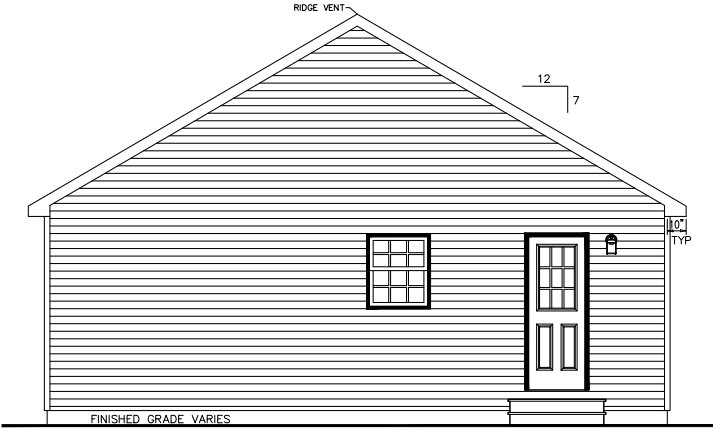
PROPRIETARY AND CONFIDENTIAL
THESE DRAWINGS AND SPECIFICATIONS ARE ORIGINAL
PROPRIETARY AND CONFIDENTIAL MATERIALS OF CHAMPION.
COPYRIGHT © 1976-2017 BY CHAMPION



REAR ELEVATION



LEFT ELEVATION



RIGHT ELEVATION

NOTES:
1. ITEMS SHOWN ON THE EXTERIOR ELEVATION DRAWINGS ARE FOR ILLUSTRATIVE PURPOSES ONLY

BUILDER / OWNER SIGNATURES:

ACCEPTED BY: _____ DATE: _____
TITLE: _____

CHAMPION FACTORY 041
CHAMPION MODULAR, INC.
10642 S. SUSQUEHANNA TRAIL
LIVERPOOL, PA 17045



BUILDER:
CHAMPION MOD INC.

CUSTOMER/PROJECT:
WOODLAND

ENGINEER'S / ARCHITECT'S SEAL

APPROVERS SEAL

MODIFICATIONS

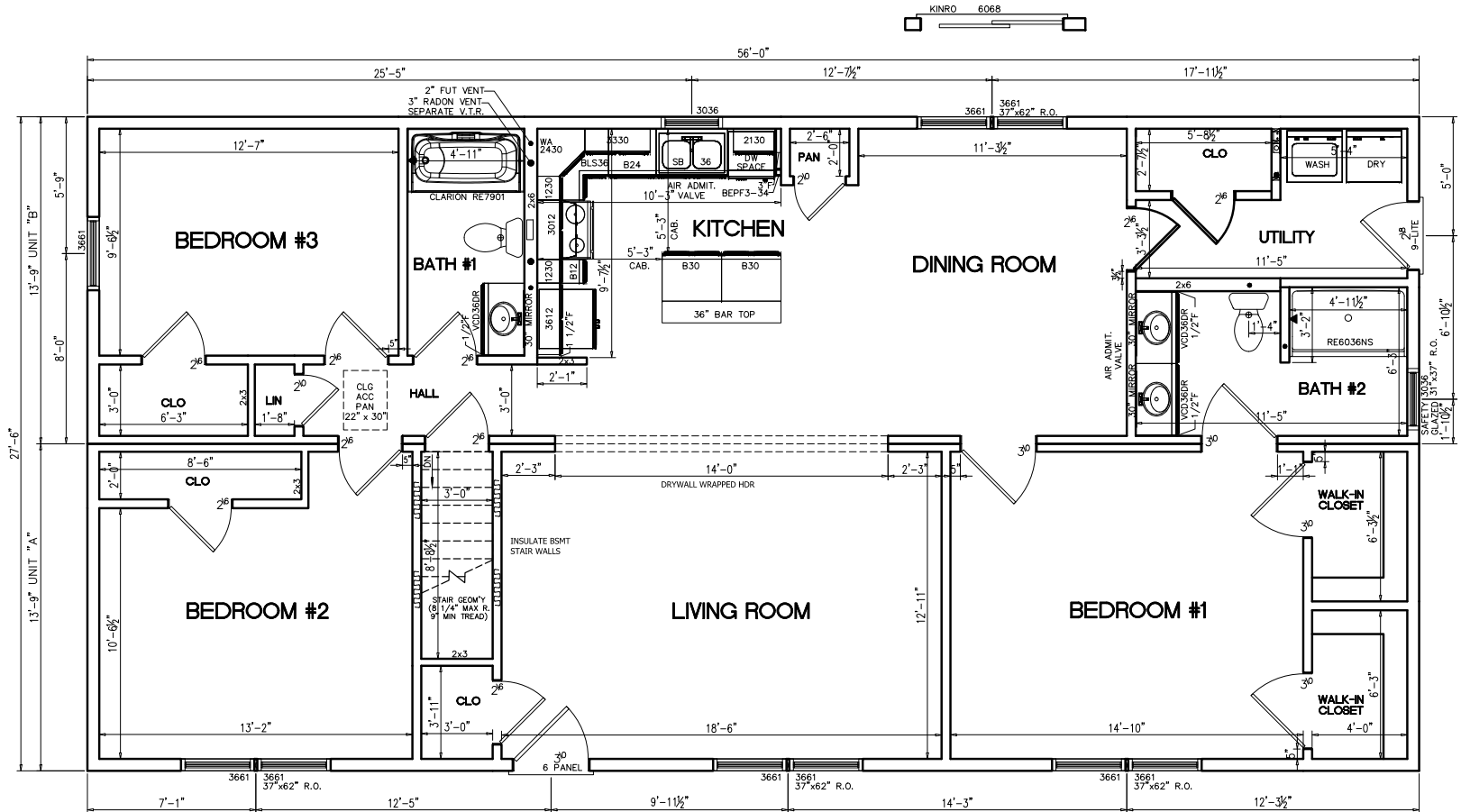
PROJECT:
WOODLAND

TITLE:
FIRST FLOOR PLAN

DRAWN BY: SAN
DATE: 09-01-21
SCALE: N.T.S.
FILENAME: THE WOODLAND 56

SHEET:
1ST FLR

PROPRIETARY AND CONFIDENTIAL
THESE DRAWINGS AND SPECIFICATIONS ARE ORIGINAL
PROPRIETARY AND CONFIDENTIAL MATERIALS OF CHAMPION.
COPYRIGHT © 1976-2017 BY CHAMPION



- NOTES:
- 2x6 EXT WALLS @ 24" O.C./2x4 MARR WALLS @ 16" O.C. (EXCEPT AS NOTED)
 - 8'-0" CLG HT.
 - 2x10 SPF#2 FLOOR JOISTS @ 19 3/16" O.C. w/5/8" OSB
 - ROOF SYSTEM TO BE 24" O.C.
 - KINRO 9750 SERIES SINGLE HUNG WINDOWS
 - BASED ON 115 VULT MPH WIND LOAD & EXPOSURE "B"
 - SITE LOCATION: CITY, ST; COUNTY; XX PSF GROUND SNOW LOAD
 - CLG BEAM OVER LIVING RM/KITCHEN TO BE: 1-1 1/2"x14" M.L.(PER MODULE)

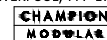
STD TRIM THROUGHOUT

BUILDER / OWNER SIGNATURES:

ACCEPTED BY: _____ DATE: _____

TITLE:

CHAMPION FACTORY 041
CHAMPION MODULAR, INC.
10642 S. SUSQUEHANNA TRAIL
LIVERPOOL, PA 17045



BUILDER:
CHAMPION MOD INC.

CUSTOMER/PROJECT:
WOODLAND

ENGINEER'S / ARCHITECT'S SEAL

APPROVERS SEAL

MODIFICATIONS

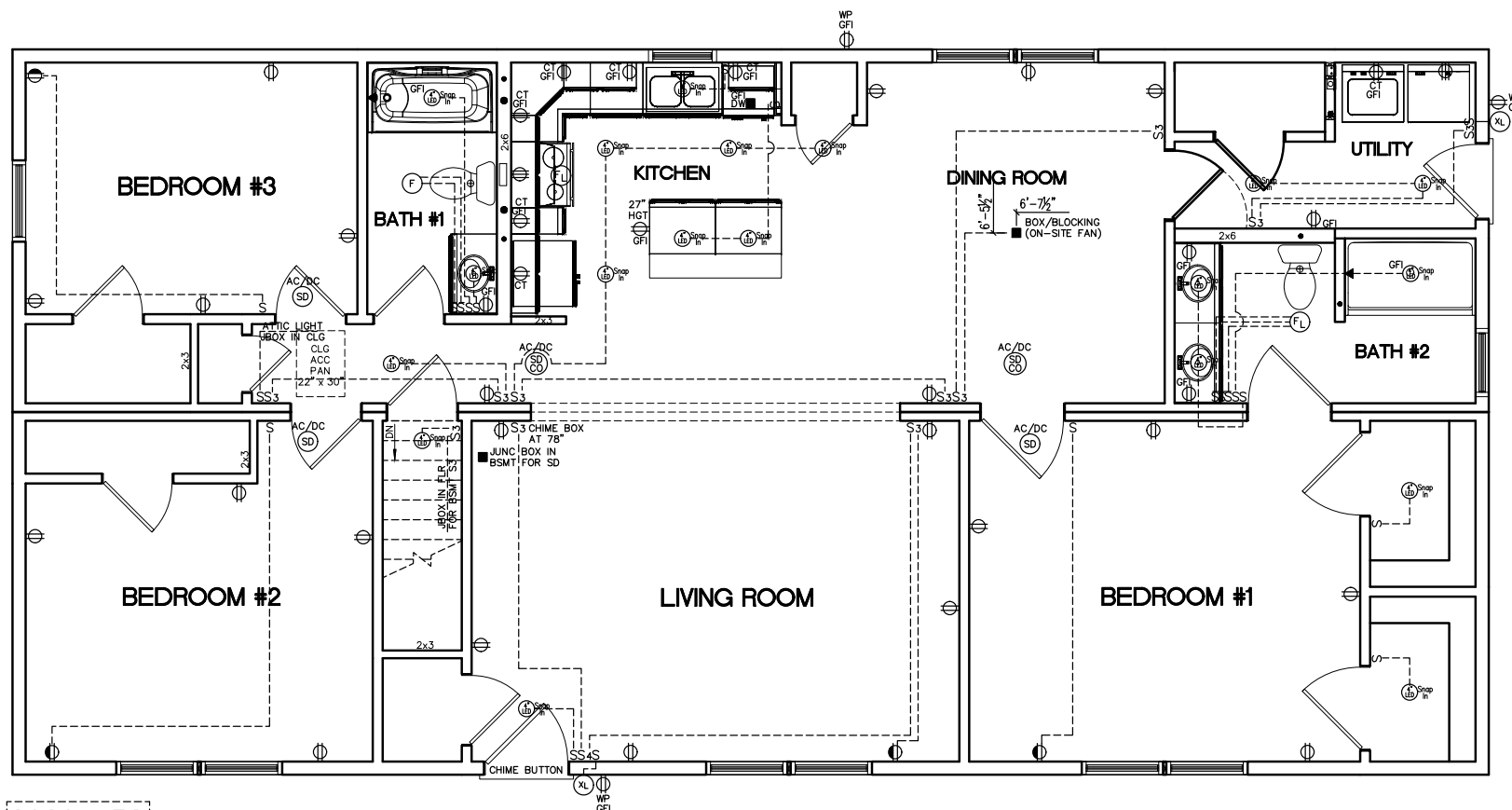
PROJECT:
WOODLAND

TITLE:
FIRST FLOOR ELECTRICAL PLAN

DRAWN BY: SAN
DATE: 09-01-21
SCALE: 3/16" = 1'-0"
FILENAME: THE WOODLAND 56

SHEET:
1ST ELEC

PROPRIETARY AND CONFIDENTIAL
THESE DRAWINGS AND SPECIFICATIONS ARE ORIGINAL
PROPRIETARY AND CONFIDENTIAL MATERIALS OF CHAMPION.
COPYRIGHT © 1976-2017 BY CHAMPION



BUILDER / OWNER SIGNATURES:

ACCEPTED BY:

DATE:

TITLE: